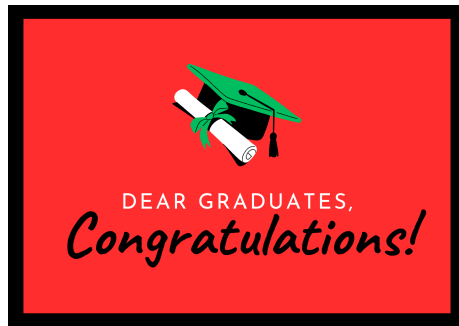
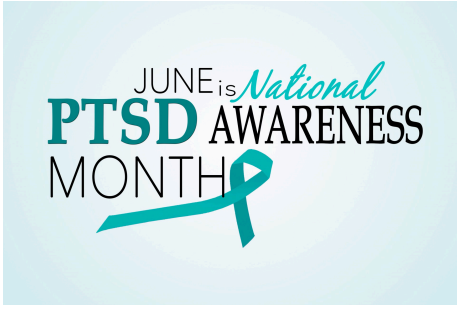


June 2023 Community 

Announcements



[Back to top](#)

MEET THE 2023-2025 EXECUTIVE BOARD



Dr. Celia McIntosh-President
 Dr. Natalie LeBlanc- Vice President I
 Sheila Johnson- Treasurer
 Yachica Johnson- Parliamentarian
 Dr. Sheniece Martin-Stancil-El- Corresponding Secretary
 Bryanna Patterson- Historian
 Bertha Davis- Recording Secretary

[Back to top](#)

OPPORTUNITIES

Share your Perspectives on Men's Health

This exploratory study seeks men's (male at birth; identifies as a man) thoughts about:

- sexual health and wellness
- sexual health promotion
- men's role in the sexual health of their communities and among their female partners
- assets within communities that can support sexual health

You will be compensated for your time

Cis-gender Men: 1) Age 18 or older; 2) Male at birth and identify as a man; 3) Sexually active with cisgender women (female at birth); 3) currently sexually active; 4) lives in Western/Central New York

For more information, contact: ehealth.tool@urmc.rochester.edu (subject line: Men's health study); 585-275-4520

Eligibility screener link and QR code: <https://redcap.link/adea2z4e>

Invitations to join a local Community Advisory Council

INVITATION ONE: We are convening a community advisory council (CAC) for a study on Black and Hispanic/Latine persons of the transmenne experience (i.e. transgender women) sexual health and wellness in New York State and South Florida. The council would consist of healthcare and other providers, Black and Hispanic transgender women, and known researchers in the field. **We would like to invite you or members of your network to be a member of the CAC,** due to your experience in HIV prevention and care of Black and/or Hispanic/Latine persons and/or transgender persons.

INVITATION TWO: We are convening a community advisory council (CAC) for a study on the lived experiences of Black women/female persons (hereto referred as Black women) who are long time survivors living with HIV infection (>10 years). We have a specific focus on **Black women who are considered heavily treatment experienced living in New York State** and their perspectives on long-acting ARTs. We are also including healthcare providers who serve and provide HIV care for Black women/female persons who are living with HIV.

Both CACs would meet monthly or less. Should you have any questions or are interested in being a CAC member, or know of others who are of the lived experiences, please contact: [Natalie Leblanc@urmc.rochester.edu](mailto:Natalie.Leblanc@urmc.rochester.edu).

Gilead welcomes funding requests for innovative, high impact projects that relate to our core therapeutic areas.

GILEAD
Creating Possible

Medical and Scientific Grants

Ongoing education is essential to ensuring that healthcare professionals (HCPs) can continue to deliver the best possible care based on the latest advances in medicine. Gilead supports high impact, medical education programs that expand the knowledge and skills of HCPs.

Gilead has funded a range of Medical and Scientific projects, including:

- Continuing medical education (CME) accredited by ACCME or another relevant organization
- Non-accredited continuing education in compliance with FDA*
- Scientific conferences
- Lecture series or symposia

Medical and Scientific Grants are provided to not-for-profit organizations including:

- Medical universities
- Professional associations
- Community health centers
- Hospitals and academic medical centers

Examples of program topics include, but are not limited to:

- Prevention
- Screening and linkage to care
- Access to care
- Health equity
- Retention in care
- Evidence-based treatment education

Patient and Community Grants

Lack of awareness can be a significant barrier to screening and may lead to acute disparities in care. Gilead supports patients and their communities by funding a variety of awareness-raising projects.

Examples of Patient and Community Grants Gilead has funded include:

- Events or resources to educate patients about prevention and care options, such as:
 - Presentations
 - Web-based resources
 - Printed materials
 - Testing and screening initiatives

Patient and Community Grants are provided to not-for-profit organizations including:

- Patient advocacy and support groups
- Hospitals and clinics
- Nonprofit service organizations
- Professional associations
- Academic medical centers and universities

*The patient community support grants are educational activities.

GILEAD
Creating Possible

Grant applications must be submitted online through our funding portal.

Please find information about the grant program and instructions on how to register for an account with the funding portal at www.gilead.com/purpose/giving/what-we-fund.

Before registering for an account and submitting an application, it is important that you read the relevant guidance documents and FAQs to ensure your request meets the requirements of the grants program.

Funding requests must be **submitted a minimum of 6 weeks prior** to the start of the activity.

Please note, completion and submission of a grant application does not guarantee funding and all grants are subject to review. Grant programs must be independent of Gilead. Commercial and field-based Medical Affairs Personnel may not solicit or discuss grant applications with applicants or participate in the grants process.

We consider applications for programs within the following therapeutic areas:

VIRAL DISEASES	ONCOLOGY
<ul style="list-style-type: none"> HIV HIV Prevention HBV 	<ul style="list-style-type: none"> HCV HDV COVID-19 Hematologic Malignancies Solid Tumors (Breast and Bladder)

NOT THE TYPE OF GRANT YOU'RE LOOKING FOR?

Investigator Sponsored Research (ISR)

ISR Grants support research projects in specific populations and topics. These programs represent Gilead's commitment to address unmet patient needs in therapeutic areas such as Oncology, HIV and Liver Diseases.

Learn more at www.gilead.com/science-and-medicine/research/investigator-sponsored-research

GILEAD, and the GILEAD Logo and trademarks of Gilead Sciences, Inc. © 2023 Gilead Sciences, Inc. All rights reserved. January 2023



CEI EVENTS



REGISTER NOW! 9th Annual NYS Sexual Health Conference: Emerging Issues and Practice Updates

Webinar
Zoom
Monday, 06.05.2023
12:00 PM - 1:30 PM EST



Registration Open! The 2023 New York State HIV Primary Care and Prevention Conference


Webinar
 Zoom
 Friday, 06.23.2023
 8:30 AM - 3:30 PM EST

[Back to top](#)

Monthly Meeting Information

June 2023

Rochester Black Nurses Association Inc.



Open to all RNs, LPNs, Nursing Students, Retirees and those who support the mission of NBNA

NBNA's mission: To serve as the voice for Black nurses and diverse populations ensuring equal access to professional development, promoting educational opportunities and improving health.

RBNA motto: "The Heart of Community Health: Bridging the Gap"
 Chapter Meetings occur the 4th Tuesday of the month 6-8pm
 Sponsored by University of Rochester, School of Nursing
 Guest Speaker: NA

Location: Zoom ID 854 4269 2245
When: 4th Tuesday of the month
 June 27th, 2023
Time 6-8pm

Join our FB and Instagram @RochesterBNA
 Email: Nbna.rochester@gmail.com
 Website: rocbna.org
 Call/Text: 585.210.8374

2023 CALENDAR

Rochester Black Nurses Association Continuing Education Program Dates

*includes chapter meetings
 *** CEU month subject to change***

1 st QUARTER	EVENT	DATE & TIME
January	Chapter Meeting	January 24 th , 2023 6-8p
February	Chapter Meeting Guest Speaker: Thera Blasio with Alzheimer's Association	February 28 th , 2023 6-8p
March	Chapter Meeting	March 28 th , 2023 6-8p
2 nd QUARTER	EVENT	DATE
April	Chapter Meeting	April 25 th , 2023 6-8p
April	CEU Topic: Black Maternal Health Presenter: Dr. Celia McIntosh 1.0 Credits	April 27 th , 2023 6:30-8p
May	Chapter Meeting Guest Speaker: Bryanna Patterson with Protected Legacies, LLC	May 23 rd , 2023 6-8p
June	Chapter Meeting	June 27 th , 2023 6-8p
3 rd QUARTER	EVENT	DATE
July	NO CHAPTER MEETING-Enjoy your summer	NO CHAPTER MEETING
August	Chapter Meeting	August 22 nd , 2023 6-8p
September	Chapter Meeting CEU Topic: Impact of Racism on Black Nurses Presenter: Dr. Yvette Conyers 1.0 Credits	September 26 th , 2023 6-7p September 26 th , 2023 7p-8p
4 th QUARTER	EVENT	DATE
October	Chapter Meeting	October 24 th , 2023 6-7p
November	Chapter Meeting CEU Topic: Black Trans Care Presenter: Faith Lambert TBD 1.0 Credits	November 28 th , 2023 6-8p

[Back to top](#)

Upcoming Events

Rochester Black Nurses Association Presents:
Men's Health Matters Panels and Focus Group for MENS HEALTH WEEK 2023
(June 12-18th, 2023)



In collaboration with Jackson's Health
Men's Health Matters Panel 1:
HEALTH BELOW THE BELT
(topics: anal/penile health, colonoscopy & other gut matters)
Friday June 16, 2023 @ 1:30 PM
 Virtual:
<https://urmc.zoom.us/j/91276172153>


Perspectives on Men's Health
Focus Group Discussion
Wednesday June 14, 2023 (6:30 PM):
<https://redcap.link/adea2z4e>




Men's Health Matters Panel 2:
MENS REPRODUCTIVE HEALTH
(topics: Preconception health & fatherhood)
Saturday June 17, 2023 @ 10:30 PM
 Virtual:
<https://urmc.zoom.us/j/94363856049>



WEBINAR The Nurse Practitioner Association
 New York State



Black Maternal Mortality Crisis: Solutions for Change
Webinar - Tuesday, June 13, 2023
7:00 PM - 8:00 PM
1 contact hour (pending AANP approval)

[Register Here](#)

In the United States, approximately 900 women die each year during childbirth and postpartum periods due to pregnancy related complications. National and State surveillance reports have deemed that 80% of these deaths are preventable. The maternal morbidity and mortality rates are the highest among industrialized nations worldwide. The current data suggests that this trend is worsening despite significant advancements in healthcare practices and technologies. Pregnant and postpartum women of color experience significant health disparities and poorer health outcomes. Black women are 3 to 4 times more likely to die in comparison to White women. These disparities are up to 18 times higher in underserved communities. Access to care, implicit bias, and systemic racism are the leading causes of these disparities. This presentation will explore the history of Black maternal health disparities, causes of maternal deaths, and proposed solutions to solving this epidemic.

Objectives:

1. Discuss the history of maternal health and the generational impact of health disparities in women's health.
2. Describe socio-political factors that have contributed to the maternal health crisis in the United States.
3. Discuss how to formulate practical solutions to reduce maternal mortality rates at the local, state, and national levels.

Registration Fee: \$25 for NPA members - \$35 for non-members

This webinar will be recorded and available until September 13, 2023. Registration required on or before June 9, 2023.

Cancellation: An administrative fee of \$10 will be charged for any cancellations received on or before June 9. After June 9 no refunds will be issued.

Contact Hours: This educational activity will be submitted to the American Association of Nurse Practitioners for approval of up to 1 contact hour of accredited education.



SOCIETY NEWS
FYI: All Staff
 April 20, 2023




Black MS Experience Summit Registration is Open

Being Black with MS carries unique challenges and experiences. From scientific and clinical differences in the disease itself, to inequities in the healthcare system, and more. The Black MS Experience Summit is an opportunity to connect with others who understand the distinct experience of life with MS as a Black person. Throughout this interactive, two-day virtual program, we will learn from healthcare experts and share powerful stories that celebrate the resistance and resilience of the Black MS community.

This year's summit, focused on *Resist Invisibility, Embrace Identity*, will feature dynamic stories and speakers who will address invisibility and create a safe space to share stories and connect through common experiences.

New in 2023: Black MS Community Meetup opportunities will be offered each day after the breakout sessions. Attendees can casually meetup to connect with others who are navigating their own MS journeys.

Who should attend?

This program is for people affected by MS who are part of the Black community. The program's goal is to create a safe space for attendees to be seen, heard, and understood. Staff are encouraged to attend and engage in the virtual environment.

When is the Black MS Experience Summit?

- June 14-15, 2023
- 1 - 4 p.m. ET | 12 - 3 p.m. CT | 11 a.m. - 2 p.m. MT | 10 a.m. - 1 p.m. PT
- Registration opened on April 19

The upcoming National MS Society program, the Black MS Experience Summit 2023.

The Black MS Experience Summit is an opportunity to connect with others who understand life with MS as a Black person.

Being Black with MS carries unique challenges and experiences. Join the National MS Society's Black MS Experience Summit on June 14-15, 2023, at 1-4p.m. ET | 10 a.m.-1p.m. PT. The Summit will be an interactive two-day virtual program where participants will learn from healthcare experts and share powerful stories that celebrate the resistance and resilience of the Black MS community.

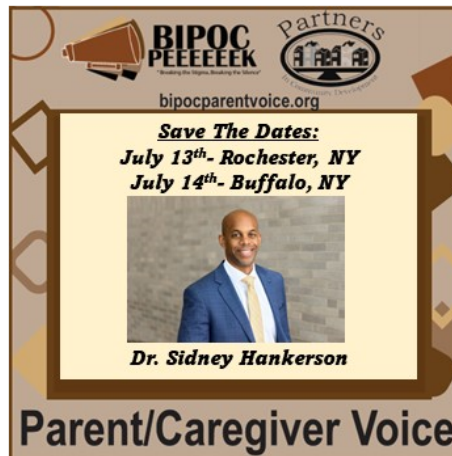
Engage in breakout sessions to learn from healthcare experts and to share common experiences. Join the Black MS Community Meetup opportunities at the end of each day to connect with others who are navigating their own MS journeys.

Don't miss this chance to stay informed, interact with top specialists, and connect with others in the Black MS community. To learn more and register, please visit: www.NationalMSSociety.org/BlackMSExperience

Save The Date

Mental Health in Communities of Color Symposium

*Healthcare professional CEUs offerings



Dr. Hankerson is well respected in the area of Black mental health research/evaluation, community engagement social determinants, faith leader outreach and more.

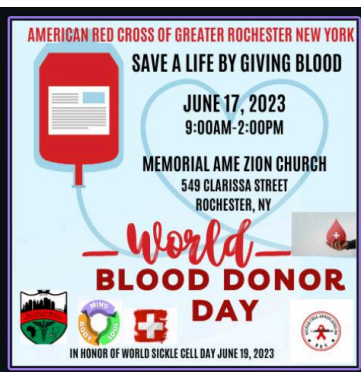
[Sidney Hankerson, MD, MBA | LinkedIn](#)

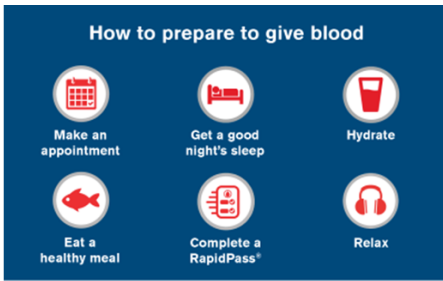
[\(225\) How to Solve and Afford the Healthcare We Need - YouTube](#)



[Back to top](#)

BLOOD DRIVES





Schedule your appointment
RedCrossBlood.org

[Back to top](#)

MENTAL HEALTH AND THE PANDEMIC



Text HOME to 741741 to connect with a Crisis Counselor

NEWLY ADDED MENTAL HEALTH RESOURCES ACCEPTING NEW CLIENTS:

Serena Viktor LMSW (Founder & Therapist @ Pila Hande Wellness Project LLC: ubunturoots@gmail.com (accepting self clients only)
214-772-1036

Danni Jo, LMHC: specializing in Maternal Health Mental Health with a certification in Perinatal Mental Health- 585-420-6174 (accepting new clients)

La Carla Holmes, FPMHNP: commonsensemh.com

National Suicide Prevention Hotline: 1-800-273-8255

YouthLine: Text teen2teen to 839863, or call 1-877-968-8491

<https://www.mharochester.org/>

<https://www.sankofafamilycounseling.com/>


<https://bpnroc.org/>

<https://www.psychologytoday.com>

<https://www.georgetownbehavior.com>

<https://www.augsburg.edu>

<https://blackmentalhealth.com>



BLACK HEALERS NETWORK
OF GREATER ROCHESTER NEW YORK

BLACK MENTAL HEALTH PROVIDERS

RAJIVAN EL-AMIN TURNER, LMHC, NCC | 585-200-7106
POPULATIONS SERVED: ADULTS, COUPLES, CHILDREN AND FAMILIES. SOME INSURANCES ACCEPTED.

ELLE ASSIORO-TIROH, LMHC, NCC, BC, TMI | 585-502-8848
POPULATIONS SERVED: ADULTS & ADOLESCENTS. SOME INSURANCES ACCEPTED.

RELICIA REED-WATT, LCSW | 585-454-9334
POPULATIONS SERVED: ADULTS & ADOLESCENTS. SOME INSURANCES ACCEPTED.

NATURAL RESTORATION COUNSELING AND CONSULTING, JINI FIGUEROA, LCSW | 585-629-6750 | POPULATIONS SERVED: ADULTS, COUPLES, CHILDREN & FAMILIES

NEW BEGINNINGS PSYCHOLOGICAL SERVICES, DR. STEPHANIE DIETER | 585-287-2426 | POPULATIONS SERVED: ADULTS, CHILDREN & FAMILIES, COUPLES. SOME INSURANCES ACCEPTED.

SANKOFA FAMILY COUNSELING SERVICES, LCSW, PLLC | 585-491-6646 | POPULATIONS SERVED: ADULTS, CHILDREN & FAMILIES. SOME INSURANCES ACCEPTED.

SYLVIA JOHNSON, LCSW | 585-271-2520 EXT. 1032
POPULATIONS SERVED: ADULTS. SOME INSURANCES ACCEPTED.

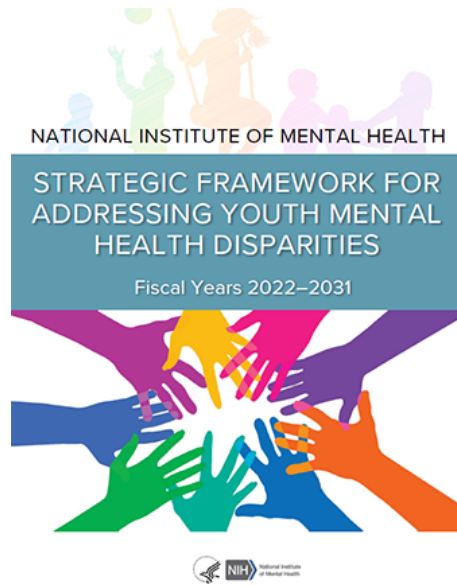
TAKE CARE COUNSELING AND CONSULTING SERVICES, VANESSA PEAVY, LCSW | 585-316-0434 | POPULATIONS SERVED: ADULTS AND ADOLESCENTS.




Sharee L. Gunner, M.S., LMHC
Licensed Mental Health Counselor
585-280-4688
support@newwaymentalhealthcounseling.com
www.newwaymentalhealthcounseling.com

[Back to top](#)


NATIONAL INSTITUTE OF MENTAL HEALTH STRATEGIC FRAMEWORK FOR ADDRESSING YOUTH MENTAL HEALTH



NATIONAL INSTITUTE OF MENTAL HEALTH

STRATEGIC FRAMEWORK FOR ADDRESSING YOUTH MENTAL HEALTH DISPARITIES

Fiscal Years 2022–2031



[Explore the Full Framework!](#)

Purpose

The purpose of the National Institute of Mental Health (NIMH) Strategic Framework for Addressing Youth Mental Health Disparities for fiscal years 2022–2031 is to provide a conceptual approach to help guide NIMH activities, including research funding, stakeholder engagement, and workforce development, related to research on the mental health needs of youth impacted by racial and ethnic health disparities. For the purposes of this Framework, “youth” is defined as persons aged 24 and under.

Strategic Framework for Addressing Youth Mental Health Disparities

NIMH initiated the Strategic Framework for Addressing Youth Mental Health Disparities with the overarching goal of advancing scientific knowledge that can be used to inform policies and practices that will reduce mental health disparities in youth by 2031.

This Strategic Framework is structured to align with and supplement the [NIMH Strategic Plan for Research](#) and the [NIH Minority Health and Health Disparities Strategic Plan](#). In addition, the Framework complements the priorities of collaborating NIH Institutes, Centers, and Offices (ICOs), including but not limited to NIMHD and the *Eunice Kennedy Shriver* National Institute of Child Health and Human Development (NICHD). The NIMH Office for Disparities Research and Workforce Diversity developed the Strategic Framework, which was refined based on feedback received at the December 2021 conference [Identifying Opportunities and Priorities in Youth Mental Health Disparities Research](#), co-hosted by NIMH, NIMHD, and NICHD. Through 2031, NIMH may periodically update the Framework based on stakeholder feedback, emerging challenges and opportunities, and research advances.

[Back to top](#)

CONFERENCES



NATIONAL BLACK NURSES ASSOCIATION

REGISTRATION IS OPEN!
Join the **NBNA**
Conference Experience!



51st Annual NBNA Institute & Conference 2023

NBNA Fifty Years and Beyond:
Leading the way in Innovation, Built Environments, Advocacy, Mentorship and Community Engagement.

[REGISTER >>>](#)

Welcome to the 51st Annual NBNA Institute and Conference in Atlanta!

Conference Objectives:

- Discuss the criticality of innovation in advancing health care, the profession, and health equity.
- Define the concept "built environment" and its relationship to public's health in general and specifically racial and ethnic minorities.
- Examine emerging models and opportunities for improving the built environment.
- Analyze key concepts for effective mentoring of current and emerging leaders in nursing.
- Articulate new approaches for effective community engagement.
- Identify trends and issues affecting health equity and social justice.

August 1 - 6, 2023

Hilton Atlanta Hotel | Atlanta, GA

Sponsors, Exhibitors, and Guests. Register here: www.nbna.com/conf

NBNA
National Black Nurses Association, Inc.

[Program Book Chapter Ad Order Form](#)

[Program Book Chapter Ad Online Order Form](#)

[Back to top](#)

BLACK HEALTHCARE PROVIDERS



- <https://hpnrc.org/directory>
- <https://www.jacksonshealth.org/>

[Back to top](#)

ADVERTISE WITH US

ARE YOU AN EMPLOYER?

ADVERTISE WITH US

- 30 Days = \$150
 - 1 run (60 days) = \$275
 - 2 runs (120 days) = \$500

Job & Ad pricing structure

- Job: submit company logo, brief job description & link to position in a word doc
- AD: submit a product description & a link to the product on a word doc

SUBMIT AN AD

RBNA DOES NOT OFFER COMMISSION

[Can submit ad/posting here](#)

Feel free to share this flyer and link within your networks

[Back to top](#)

FOLLOW US/CONTACT US

FOLLOW Us



Contact Us



[Back to top](#)